

+ Portfolio Guidelines

Game Art

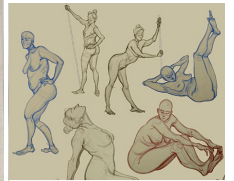
To apply for admission to LCAD, you must present a portfolio of your best work that demonstrates your strengths, interests and artistic growth in relation to the major you are seeking. Submit between 14 and 20 pages that demonstrate your best and most recent work. A single page will contain multiple images/drawings when necessary.

*All Art Examples Were Completed by LCAD Students

Figure Drawing



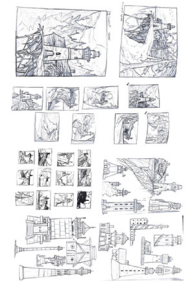
(4 PAGES) Observational drawings of people with emphasis on dynamic poses, strong silhouette, value and clear actions/attitudes. A mix of studio drawings and work done outside the studio is desirable. Suggested venues: parks, zoos, beaches, restaurants, museums and malls.



Observational Drawing



Sketches made in front of subject matter without photographic reference. Examples include still life, animals, and landscape. Emphasis should be placed on strong demonstrations of line, tone, form, and value.



Visual Development + Worldbuilding



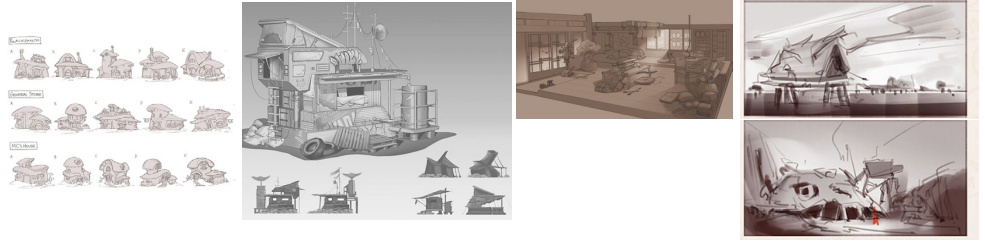
Sketches and finished designs demonstrating the development of characters, creatures, vehicles, and props using research and ideation. Formatting of pages should prioritize iteration of designs (silhouettes, thumbnails, color studies etc.) and include various views of character, props and environments.



Environment Designs



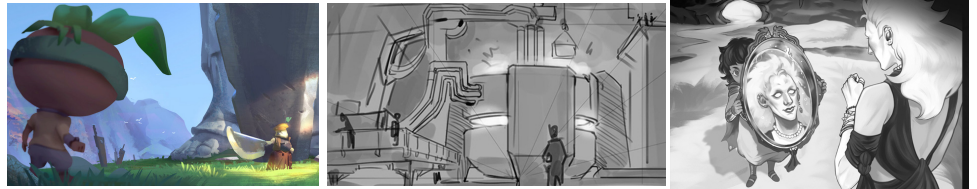
Interior or exterior spaces designed using research and ideation, expressing a sense of place and story. Examples: interior or exterior architecture or landscapes. Emphasis should be placed on strong demonstrations of storytelling, composition, and value.



Key Frame Illustration



A single image that communicates an important emotional beat or moment from a larger story. Show us various scenes for your portfolio demonstrating understanding of perspective, narrative, and of background/mid-foreground elements.



Extra Submissions

- + **3D Submissions** Please refer to 3D Formatting Guidelines.
- + Sketchbook Pages

Formatting Your Portfolio

- + Digital portfolio images should be saved as .jpg files that are no larger than 1MB each
- + Each image should be labeled as follows:
(01_Last Name_First Name), (02_Last Name_First Name)
- + Your portfolio should include an inventory list that identifies each work by number, title, media and completion date.
- + Pages of artwork should be visually legible at a full-screen view without the need of zooming or scrolling.

3D Formatting Guidelines

- + **Well-Lit Renders** (3-5 EXAMPLES OF 3D MODELS) A proper 3-point light set up for individual objects or proper mood lighting for a 3D scene. Individual objects should be rendered on a mid grey background. No completely black shadows –lights should complement the forms, not flatten the objects.
- + **Examples Of 3D Wireframes** (3-5 EXAMPLES) objects must show an understanding of clean polyflow.
- + No overlapping faces, overlapped vert errors, z-fighting or excessive polygons in unneeded areas.
- + **Examples Of UV Unwrapped Models** (2-3 EXAMPLES) showing proper UV placement and spacing in the 1x1 UV space. UV islands should be tightly packed. The object should show little to no stretching. Overlapping for symmetrical geometry is permitted. Show a render of the actual UV and a render of the model with a checkerboard applied.

Portfolios will be submitted online using our online application.

Contact your Admissions Counselor for a meeting to discuss your portfolio.

Scan for
Application Form

