



Portfolio Guidelines

Entertainment Design

To apply for admission to LCAD, you must present a portfolio of your best work that demonstrates your strengths, interests and artistic growth in relation to the major you are seeking. Submit between 14 and 20 pages that demonstrate your best and most recent work. A single page will contain multiple images/drawings when necessary.

*All Art Examples Were Completed by LCAD Students

Life Drawings



Observational drawings in front of subject matter without the assistance of a photograph. Can be done in a sketchbook. Suggested venues for sketching are parks, zoos, beaches, restaurants, museums, libraries, and cafes.

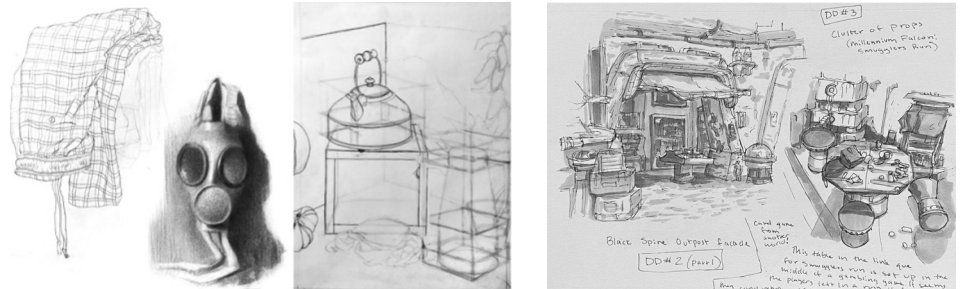


Figure Drawing



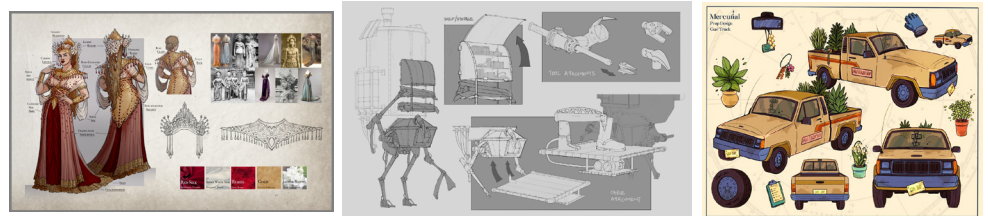
Figure drawings done from model or from observation in public spaces. Can be done in sketchbook. Suggested venues for sketching are parks, zoos, beaches, restaurants, museums, libraries, and cafes.



Visual Development + Worldbuilding



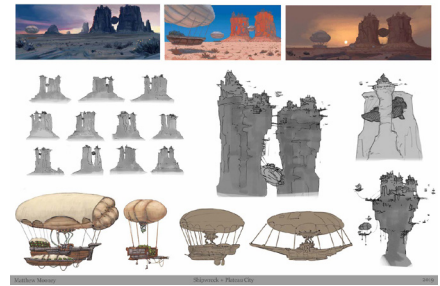
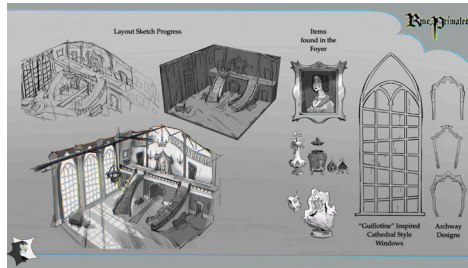
Images including research, ideation, and final renderings of characters/creatures, props, weapons, or vehicles. Work that demonstrates the process of visually solving a problem through the use of thumbnails and sketches.



Environmental Pieces



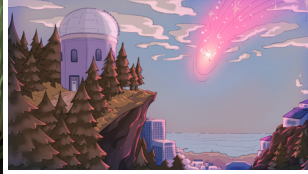
Interior or exterior spaces designed using research and ideation, expressing a sense of place and story. Examples: interior or exterior architecture or landscapes. Emphasis should be placed on strong demonstrations of storytelling, composition, and value.



Storytelling Scene



A storytelling scene is a single image that communicates an important emotional beat or moment. Can be black & white or color. Subjects could include: characters/creatures, props, vehicles, or environments.



Themed Entertainment Designs



Designs created for themed spaces with the intention of live interaction that communicate a creative environment, world, or experience with the various elements that function in that space.



Extra Submissions

- + Sketchbooks pages
- + Animation reel
- + Storyboards
- + Backgrounds

Portfolios will be submitted online using our online application.

Contact your Admissions Counselor for a meeting to discuss your portfolio.

Scan for
Application Form



Formatting Your Portfolio

- + Digital portfolio images should be saved as .jpg files that are no larger than 1MB each
- + Each image should be labeled as follows:
(01_ Last Name_First Name), (02_ Last Name_First Name)
- + Your portfolio should include an inventory list that identifies each work by number, title, media and completion date.
- + Pages of artwork should be visually legible at a full-screen view without the need of zooming or scrolling.