



Portfolio Guidelines

Drawing + Painting

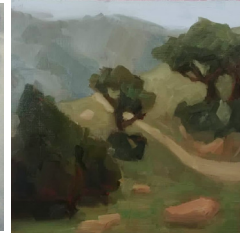
To apply for admission to LCAD, you must present a portfolio of your best work that demonstrates your strengths, interests and artistic growth in relation to the major you are seeking. Submit between 14 and 20 pages that demonstrate your best and most recent work. A single page will contain multiple images/drawings when necessary.

*All Art Examples Were Completed by LCAD Students

Observational Work



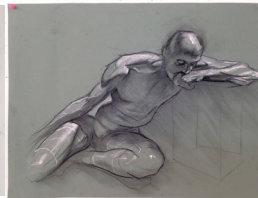
Pieces made in front of subject matter without the assistance of the photograph. Examples include still life, portraits, animal drawings and landscape. Emphasis should be placed on strong demonstrations of line, tone, form, value and object/ground relationship.



Life + Figure Drawing & Painting



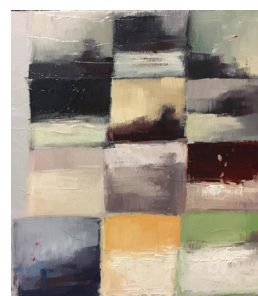
Gesture and long form drawings and/or paintings of the human figure demonstrating an understanding of form, mass, light and anatomy. Drawings do not all have to be in a classroom setting, figures drawn from places (malls, cafes, museums, public transportation, beaches, etc.) are also welcome. Pieces produced from observation are preferred.



Developmental Work



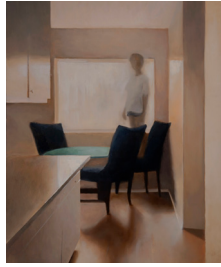
This may include sketchbook work, thumbnail sketches, value/color studies, drawing exercises, underpaintings, compositional studies, and observational sketches. Mediums to consider: graphite, charcoal, oil paint, acrylic, ink, gouache, watercolor, marker, and other water-based media.



Illustrative Drawings + Paintings



Pieces demonstrating your strengths in your greatest area of interest. Examples include illustrative drawings and paintings, 2D design, and/or sculpture. This is where your creativity and voice should shine.



Portfolios will be submitted online using our online application.

Contact your Admissions Counselor for a meeting to discuss your portfolio.

Scan for
Application Form



Majors Available

- + Drawing + Painting
- + Drawing + Painting With Illustration Emphasis
- + Drawing + Painting With Sculpture Emphasis

Formatting Your Portfolio

- + Digital portfolio images should be saved as .jpg files that are no larger than 1MB each
- + Each image should be labeled as follows:
(01_ Last Name_First Name), (02_ Last Name_First Name)
- + Your portfolio should include an inventory list that identifies each work by number, title, media and completion date.
- + Pages of artwork should be visually legible at a full-screen view without the need of zooming or scrolling.